

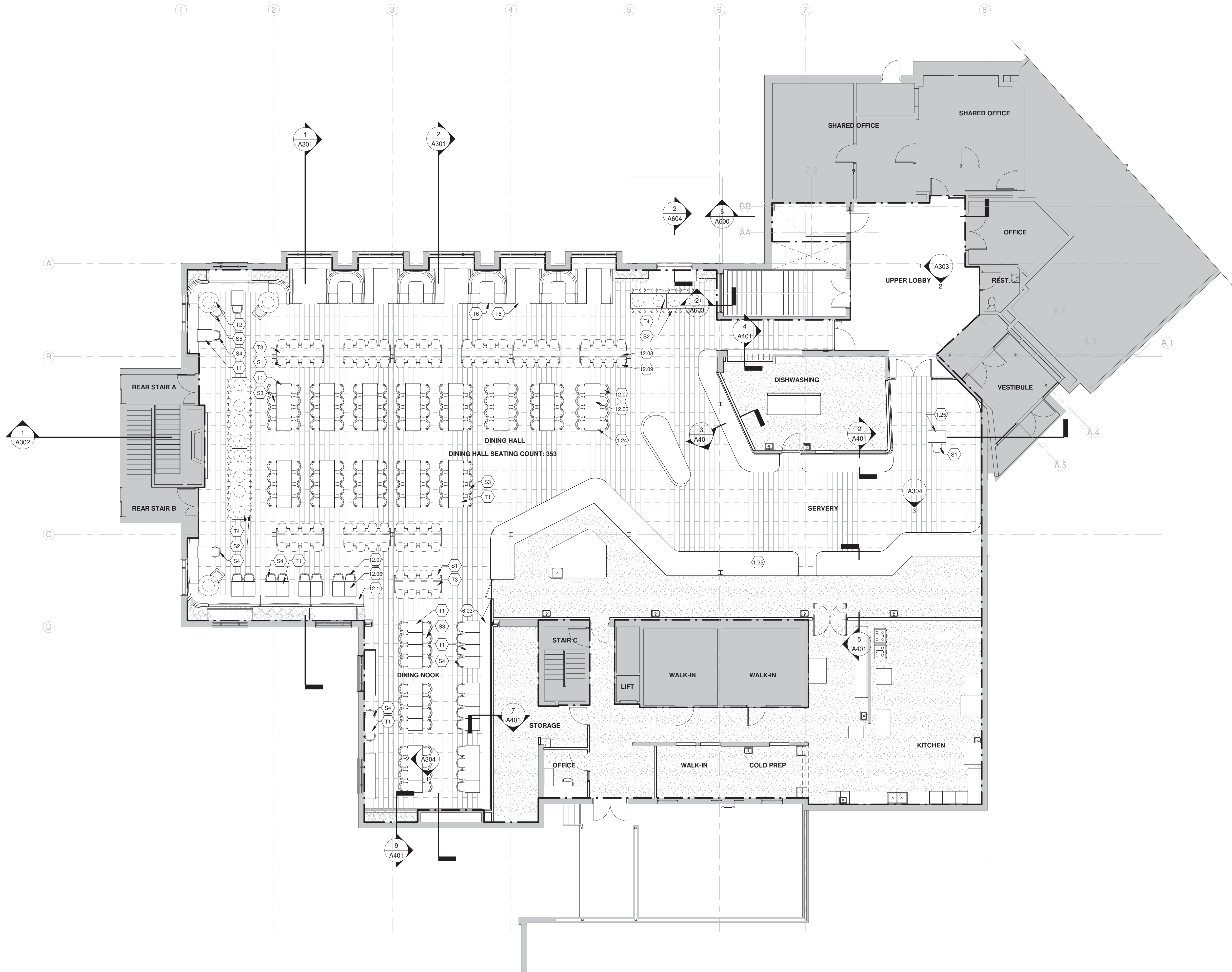
**ANDERSON HALL  
RENOVATIONS**  
105 WOODLAND RD.  
PITTSBURGH, PA

**A702 DRAWING NOTES**

- 1.24 5% of new seating is to be accessible.
- 1.25 All new casework, point-of-sale & self serve counter locations to be accessible.
- 6.03 Built-in bench with upholstered cushion.
- 12.06 Low-top tables with pedestal base and laminate finish.
- 12.07 Stackable dining chair with metal base and through-color polypropylene shell.
- 12.08 High-top dining table with integral power and usb.
- 12.09 Counter-height stool with plastic shell and metal sled base.
- 12.10 Upholstered booth seating.

**FURNITURE**

- S1 Soft Stool
  - S2 Cafe Stool
  - S3 Nesting Chair
  - S4 Cafe Chair
  - S5 Cafe Soft Chair
  - T1 Cafe Table
  - T2 Round Cafe Table
  - T3 High Table Large
  - T4 High Table Medium
  - T5 Rectangular Booth
  - T6 Rounded Booth
- END OF A702 DRAWING NOTES



REVISIONS		
NO.	DESCRIPTION	DATE

**Rothschild  
COLLABORATIVE  
Doyno**

ARCHITECTURE AND URBAN DESIGN  
PENN AT 29TH  
2847 PENN AVENUE  
PITTSBURGH PA 15222  
T 412.224.6500 F 412.224.6501  
WWW.RDCOLLAB.COM

**NOT FOR  
CONSTRUCTION**

This drawing, including its electronic form, is an Instrument of Service for use solely with respect to this Project. The Architect is the author and sole owner of said Instrument of Service and retains all common law, statutory and other reserved rights, including copyrights.

© ROTHSCHILD DOYNO COLLABORATIVE	
PRICING SET	
JANUARY 17, 2020	
TITLE FURNITURE PLAN	
DRAWING A702	

**1 FURNITURE PLAN**  
A702 1/8" = 1'-0"